

ELEVATION B



ELEVATION C



STORYBROOK
IN THE TOWN OF FERGUS

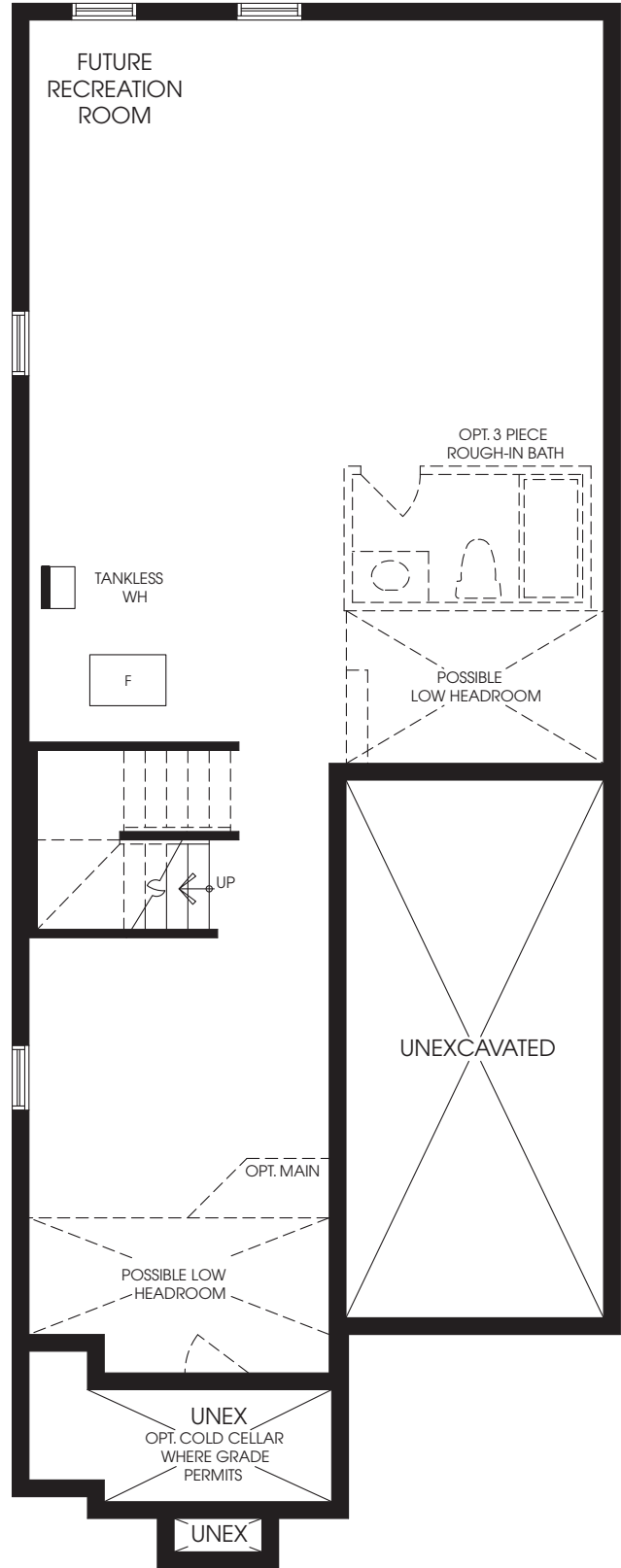
30'
singles

ELEVATION A

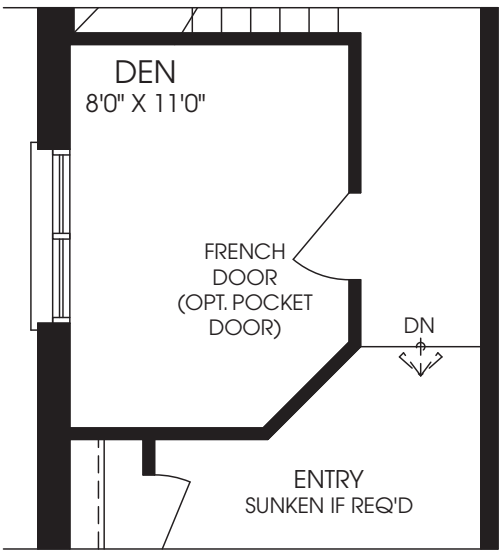


CORBETT

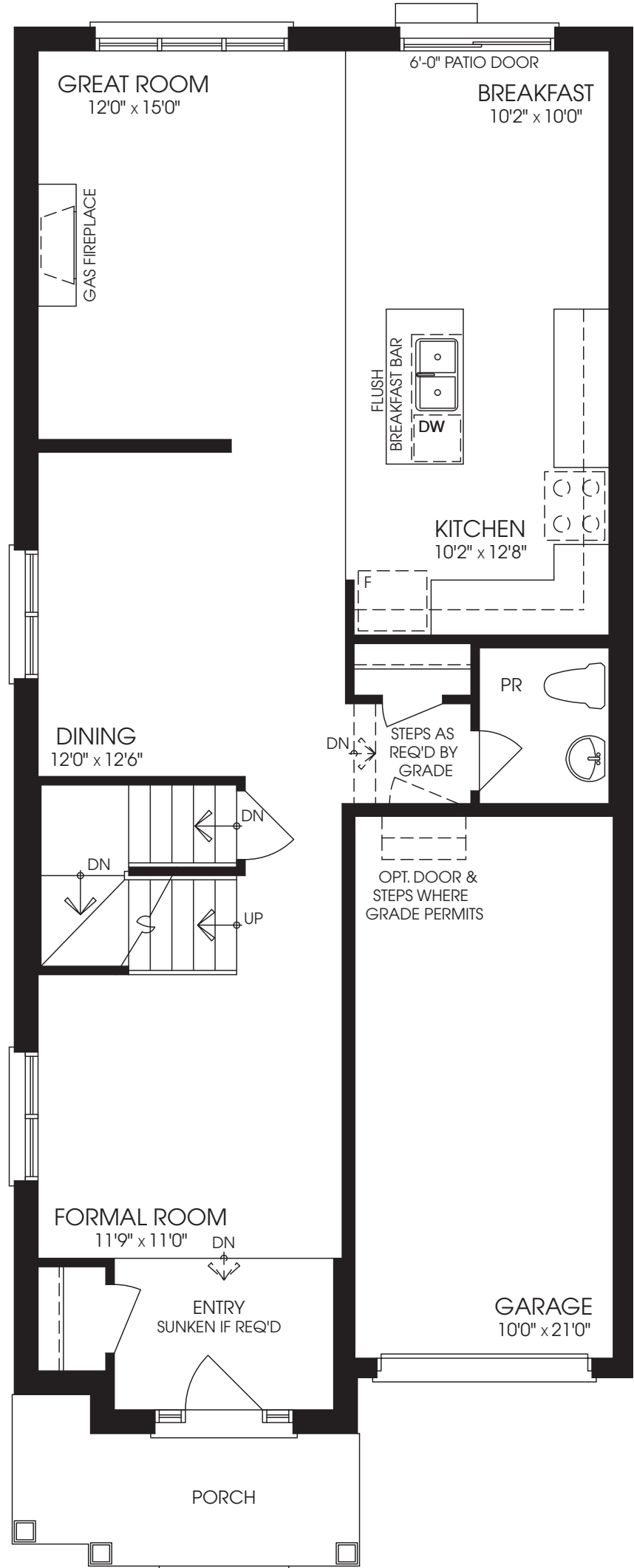
ELEV. A 2297 SQ. FT. / ELEV. B 2282 SQ. FT. / ELEV. C 2268 SQ. FT.



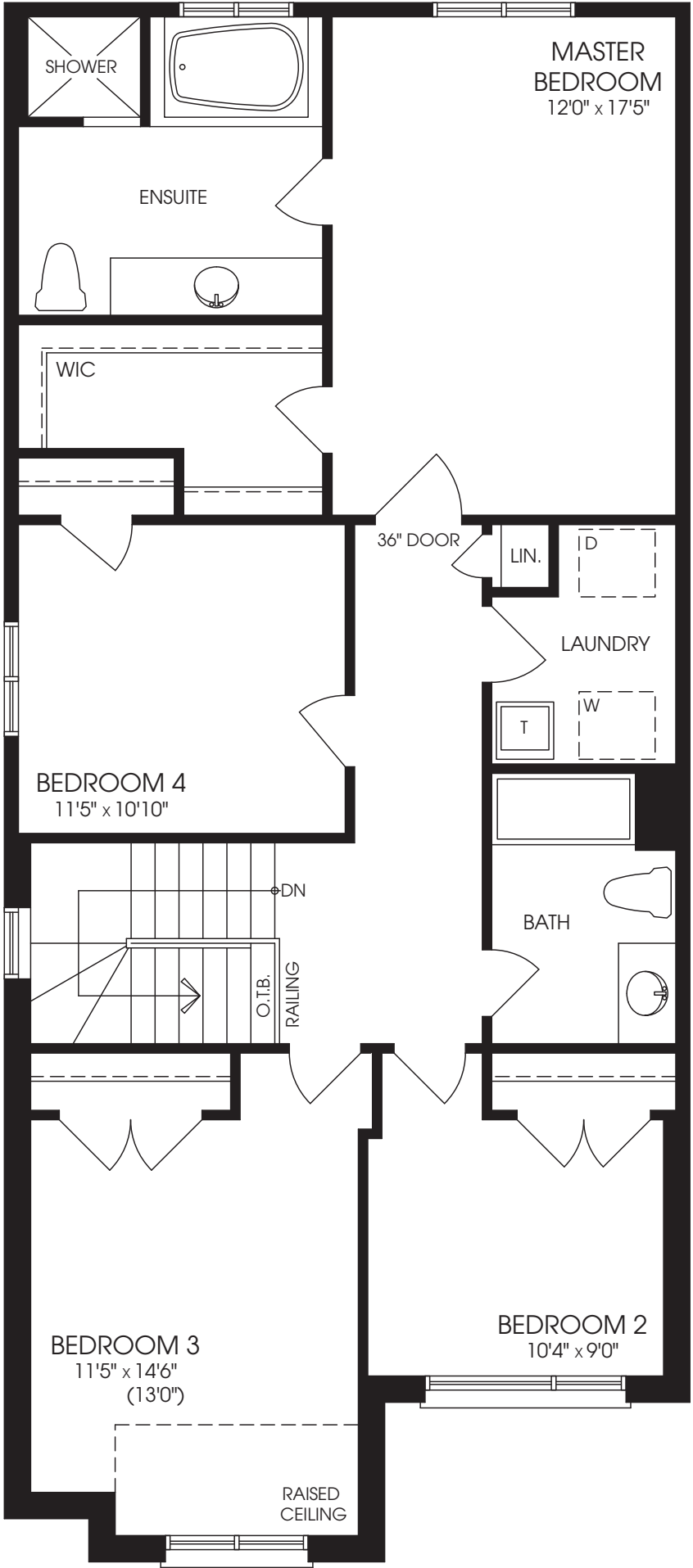
BASEMENT
ELEVATION 'B'



OPTIONAL MAIN FLOOR
W/ DEN



MAIN FLOOR
ELEVATION 'B'



SECOND FLOOR
ELEVATION 'B'