

# HUMBER

ELEV. A 1734 SQ. FT. / ELEV. B 1742 SQ. FT. / ELEV. C 1734 SQ. FT.

ELEVATION B



ELEVATION C



STORYBROOK  
IN THE TOWN OF FERGUS

30'  
singles

ELEVATION A



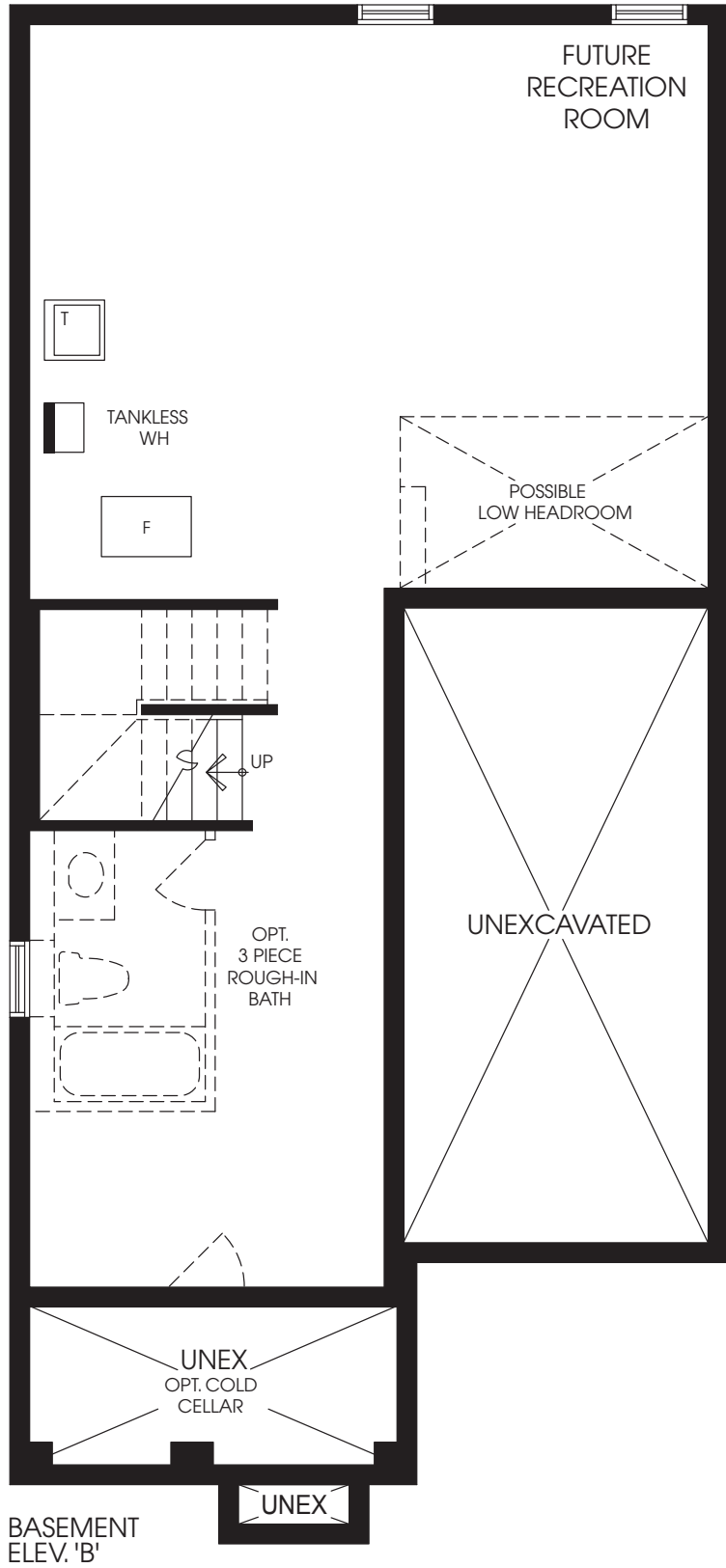
# HUMBER

ELEV. A 1734 SQ. FT. / ELEV. B 1742 SQ. FT. / ELEV. C 1734 SQ. FT.

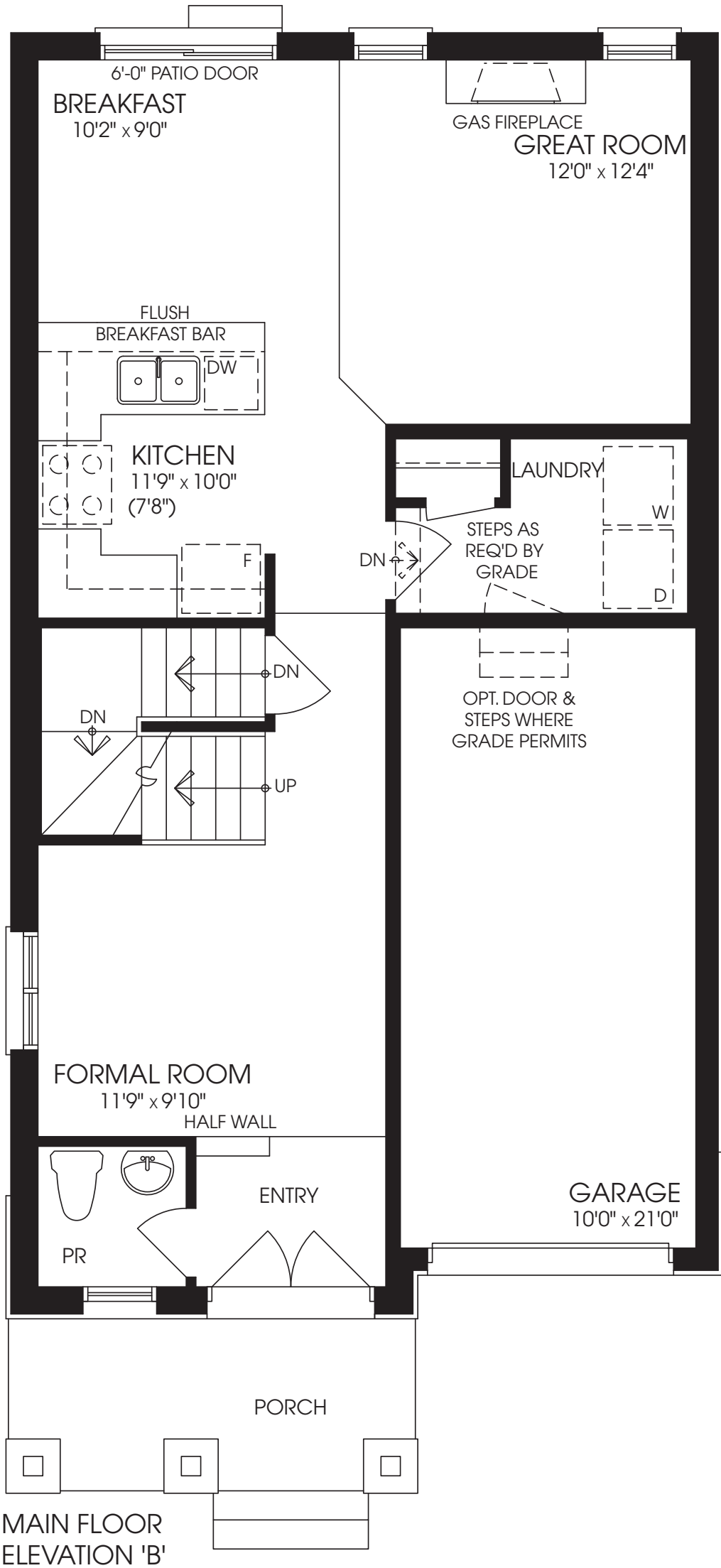


HUMBER

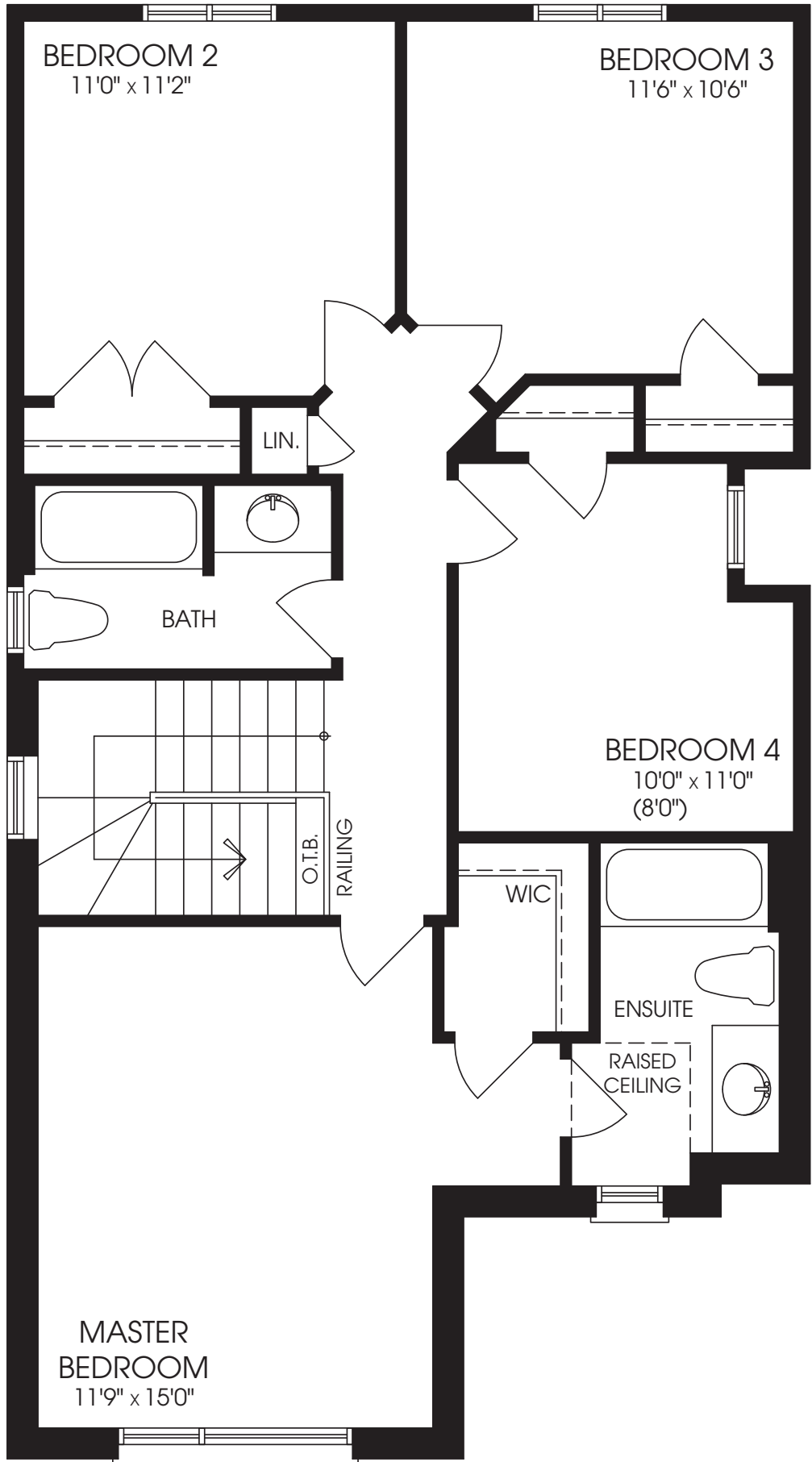
ELEV. A 1734 SQ. FT. / ELEV. B 1742 SQ. FT. / ELEV C. 1734 SQ. FT.



BASEMENT  
ELEV. 'B'



MAIN FLOOR  
ELEVATION 'B'



SECOND FLOOR  
ELEVATION 'B'