

Briggs

2895 SQUARE FEET | 2878 SQUARE FEET | 2895 SQUARE FEET
 ELEVATION A ELEVATION B ELEVATION C



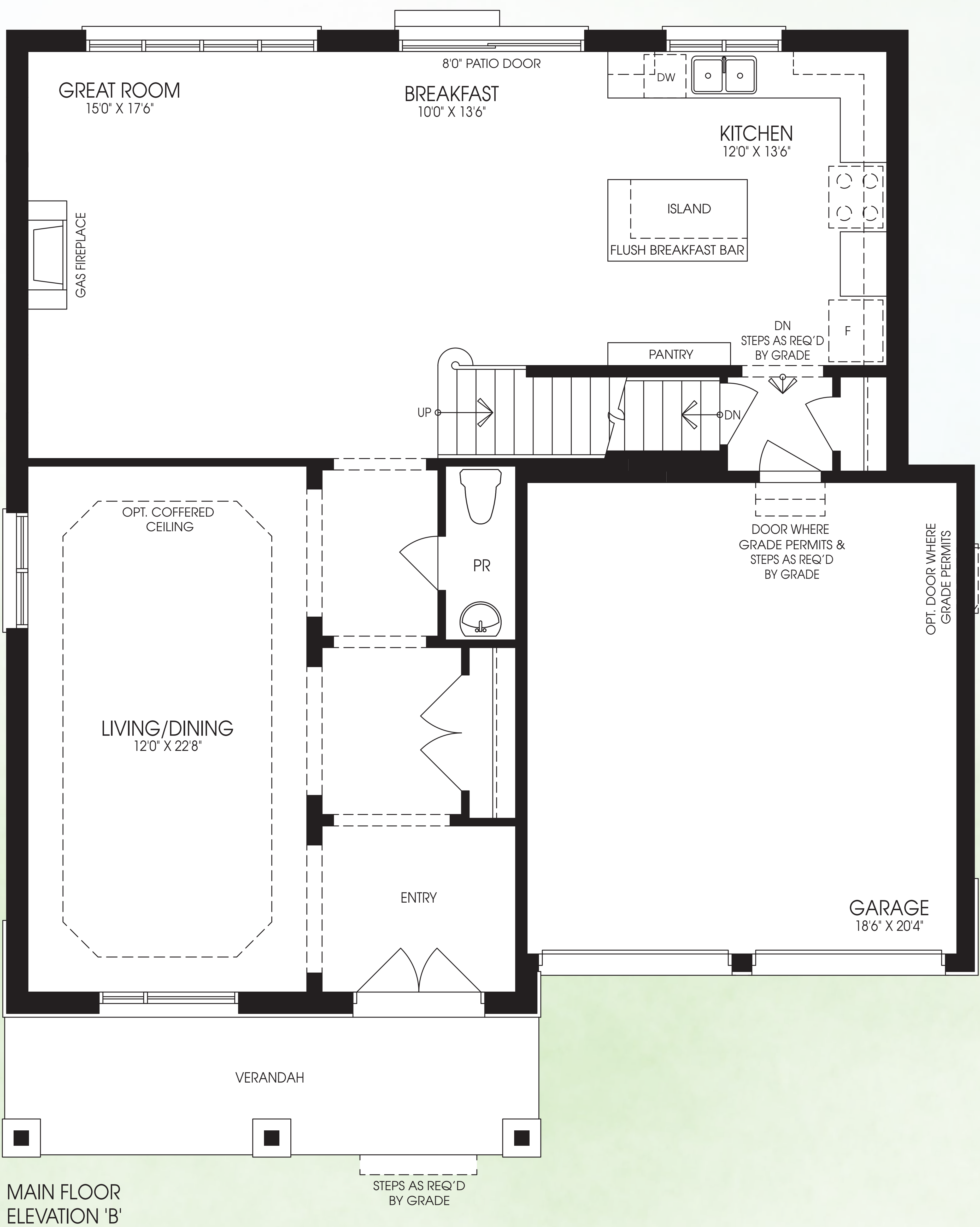
ELEVATION A



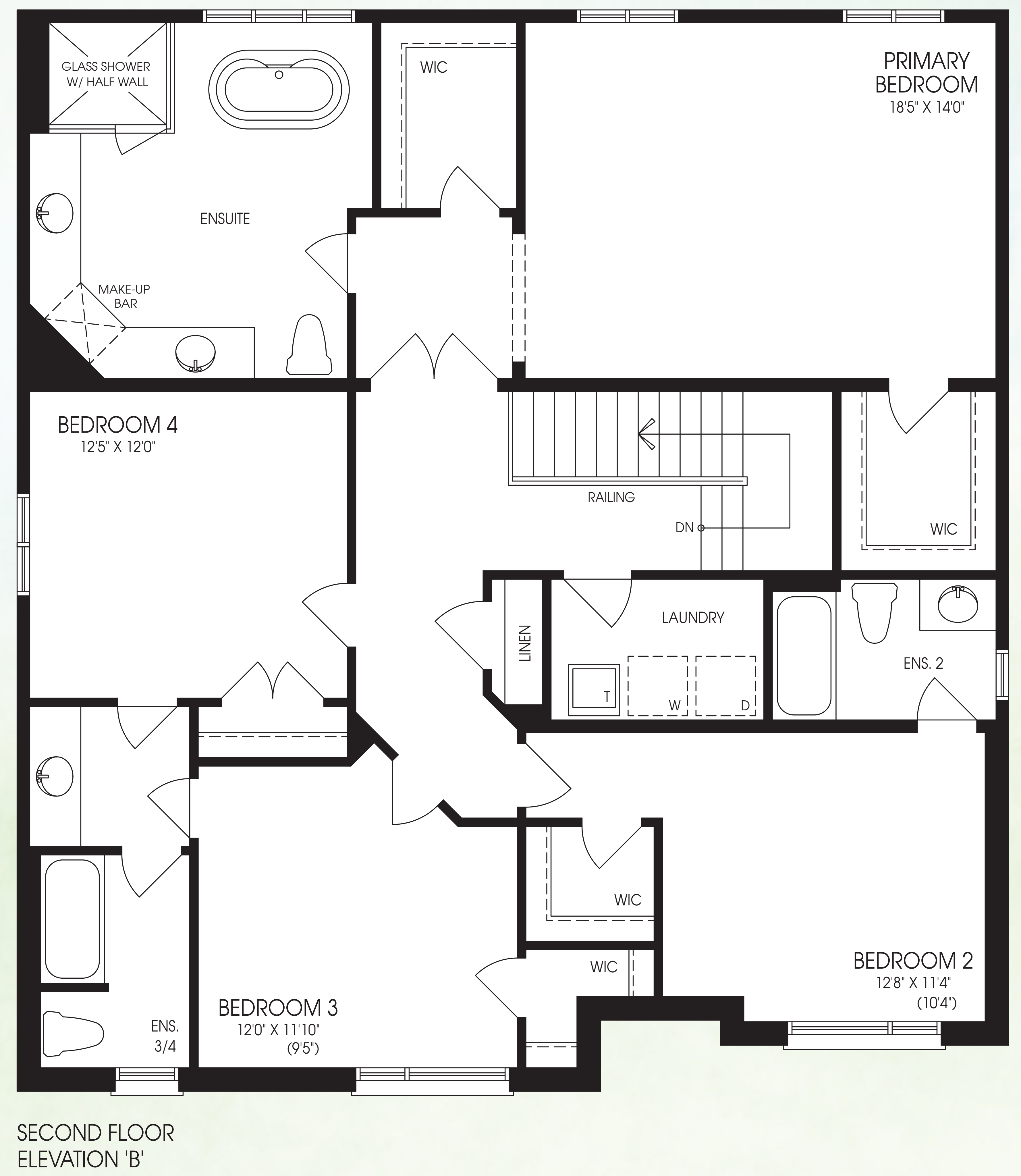
ELEVATION B



ELEVATION C



MAIN FLOOR
ELEVATION 'B'



SECOND FLOOR
ELEVATION 'B'