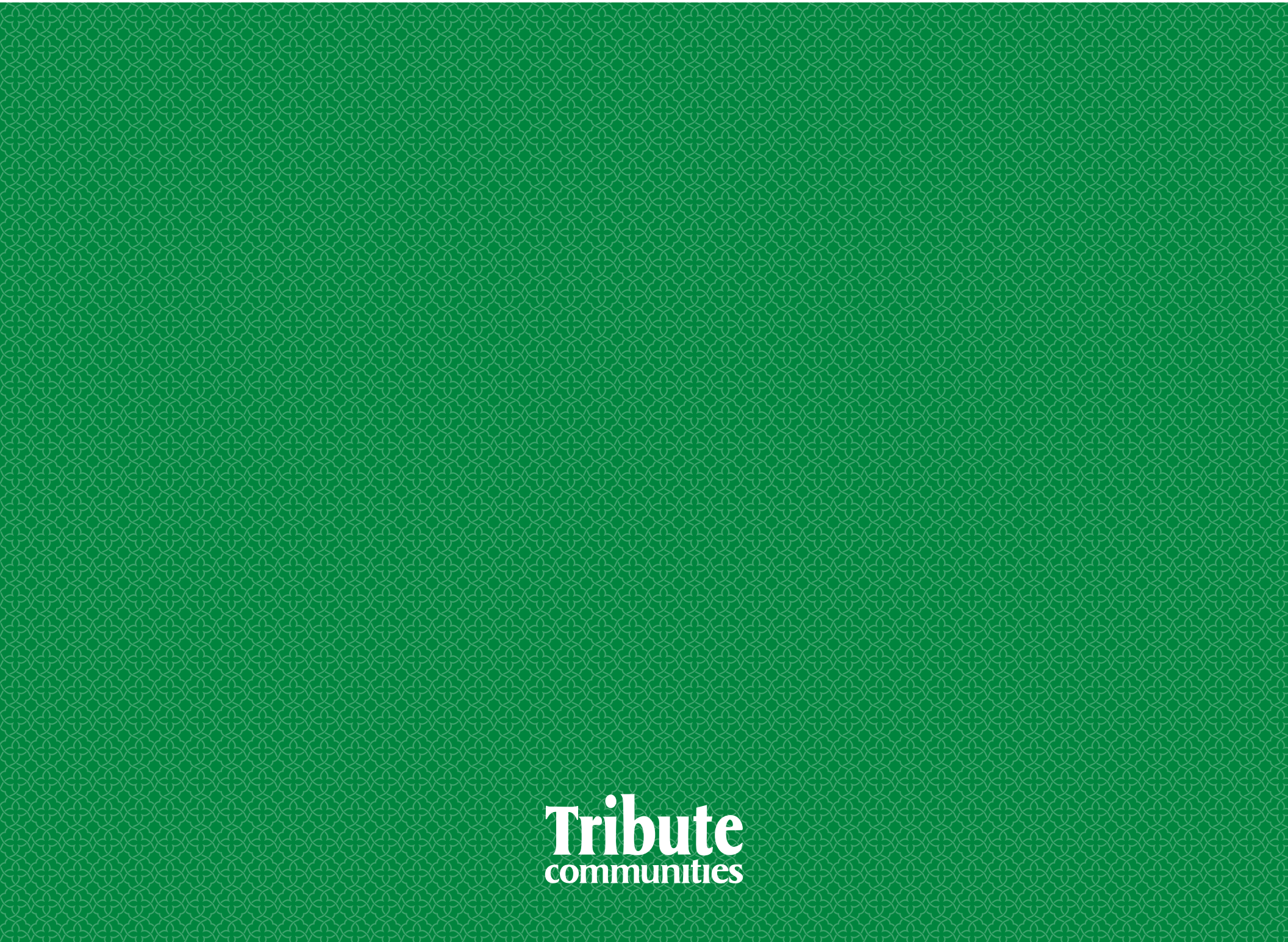


ELEVATION B



ELEVATION C



**Tribute**  
communities

50'  
singles

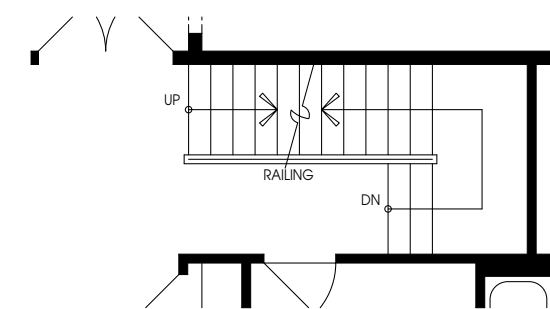
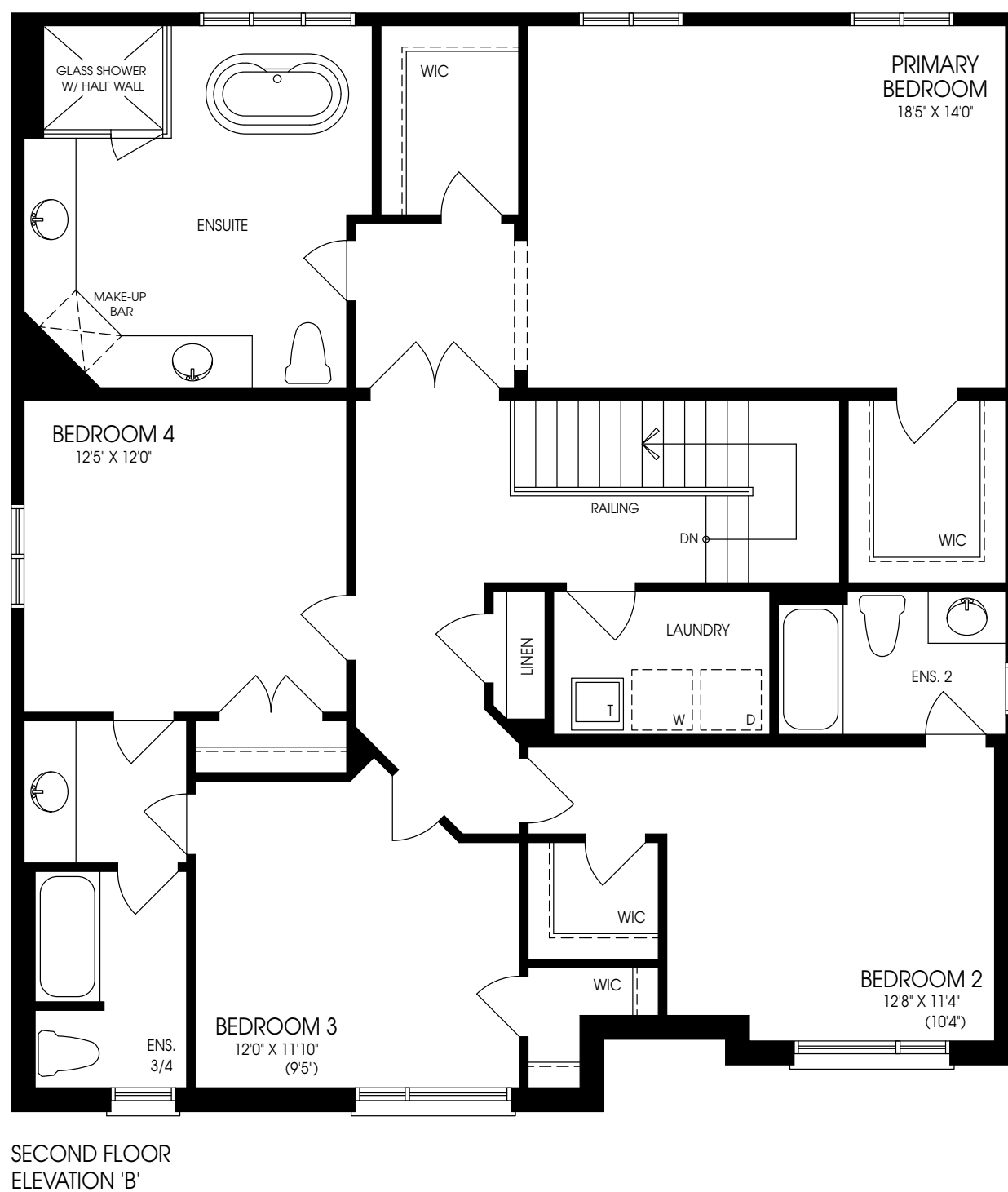
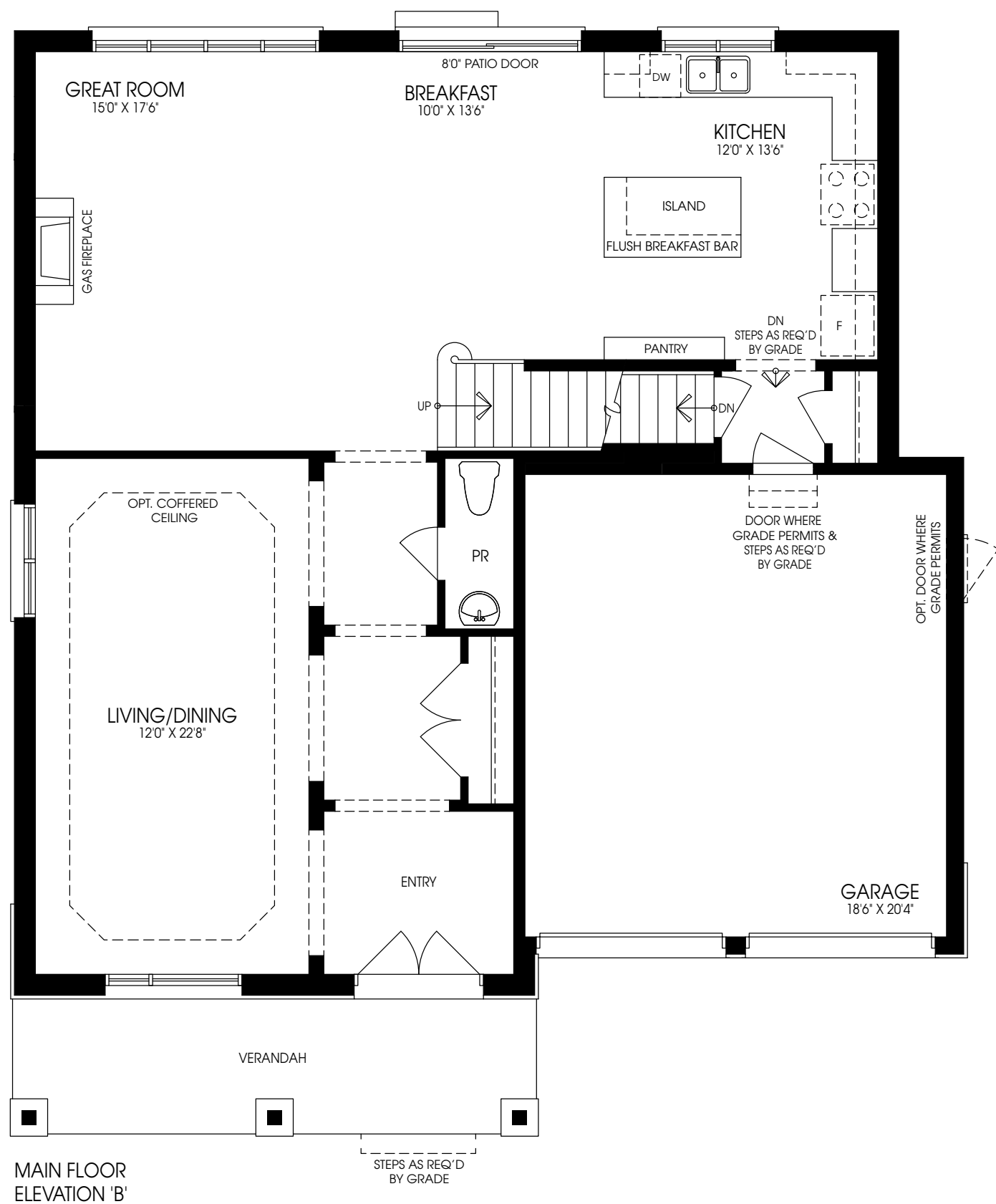


ELEVATION A

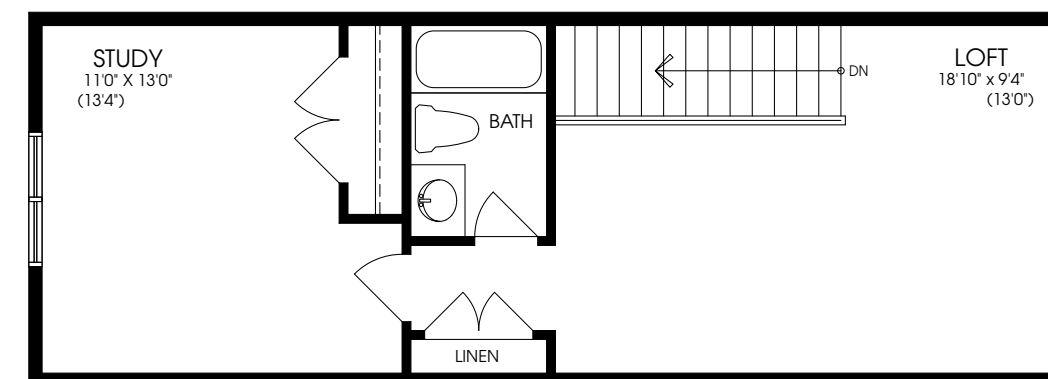


**BRIGGS**

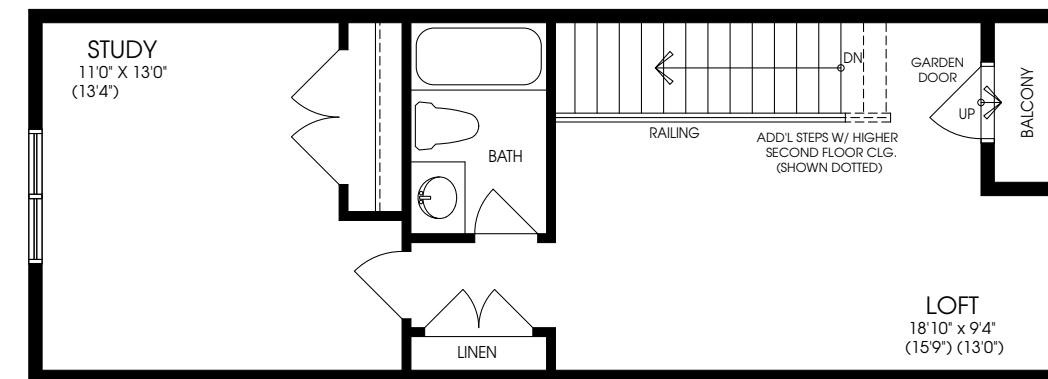
ELEV A 2895 SQ. FT. / ELEV B 2878 SQ. FT. / ELEV C 2895 SQ. FT.



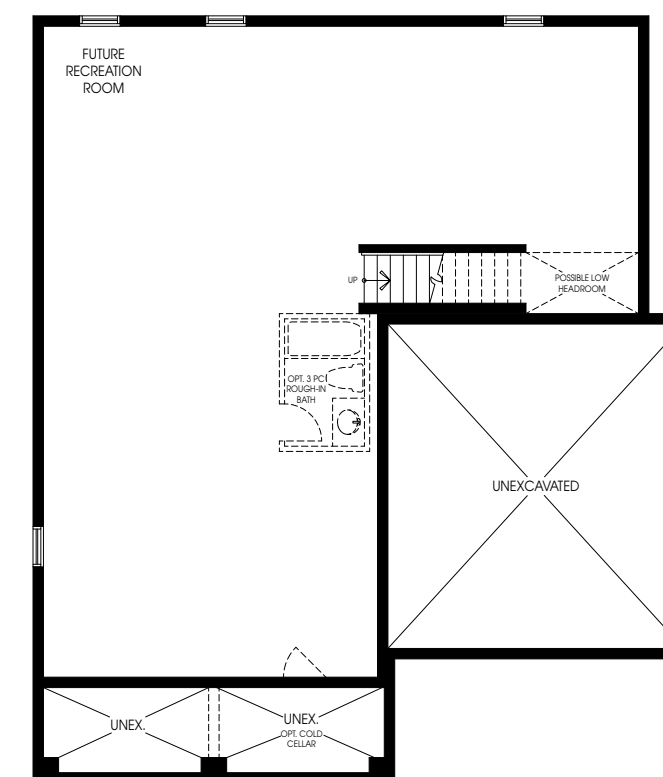
PARTIAL SECOND FLOOR FOR OPTIONAL LOFT



OPTIONAL LOFT ELEVATION 'B'



OPTIONAL LOFT WITH BALCONY LOFT BALCONY REQUIRED DUE TO GRADE ELEVATION 'B'



BASEMENT ELEVATION 'B'