

# Briggs

2891 SQUARE FEET | 2874 SQUARE FEET | 2891 SQUARE FEET  
ELEVATION A ELEVATION B ELEVATION C



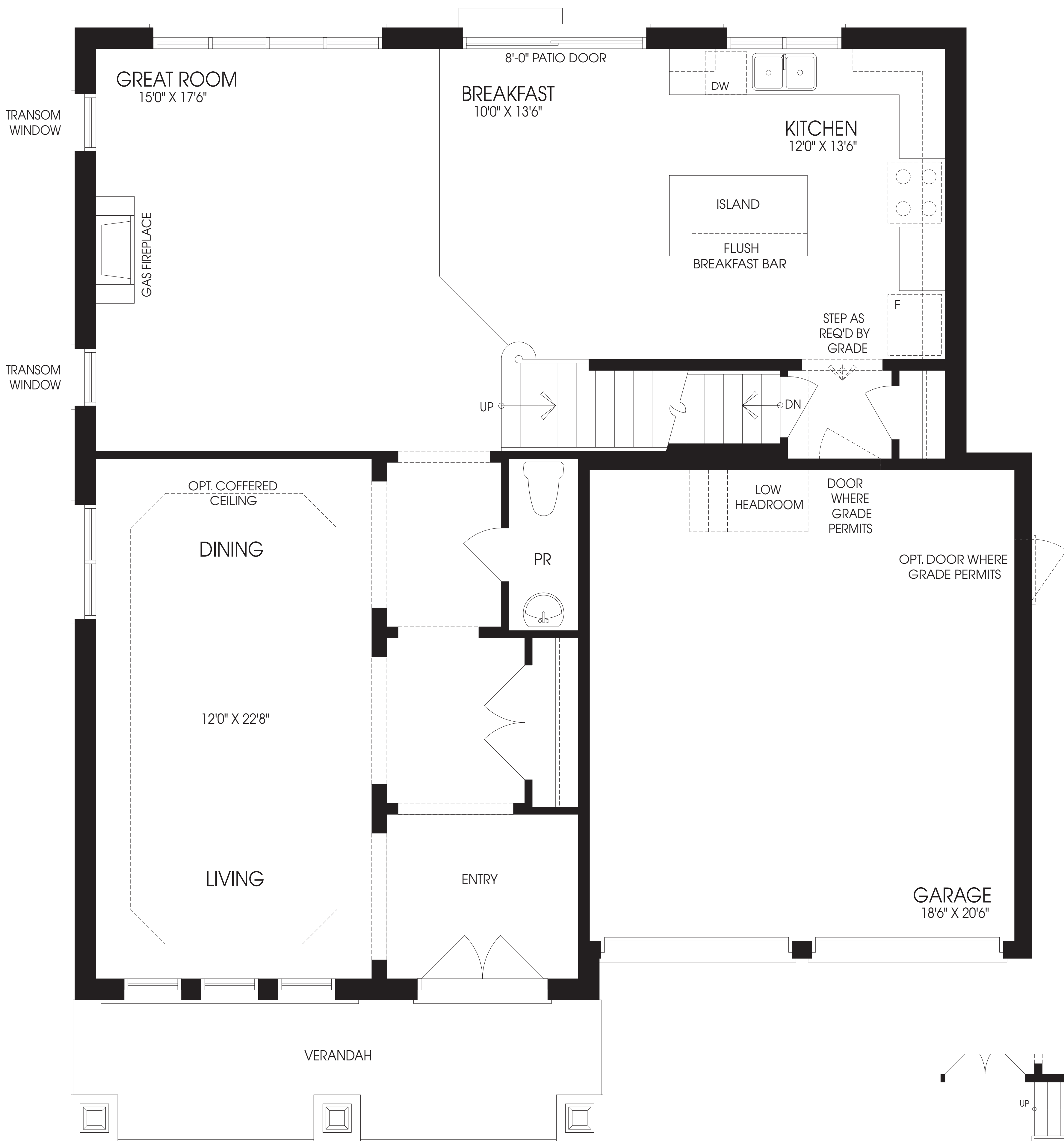
ELEVATION A



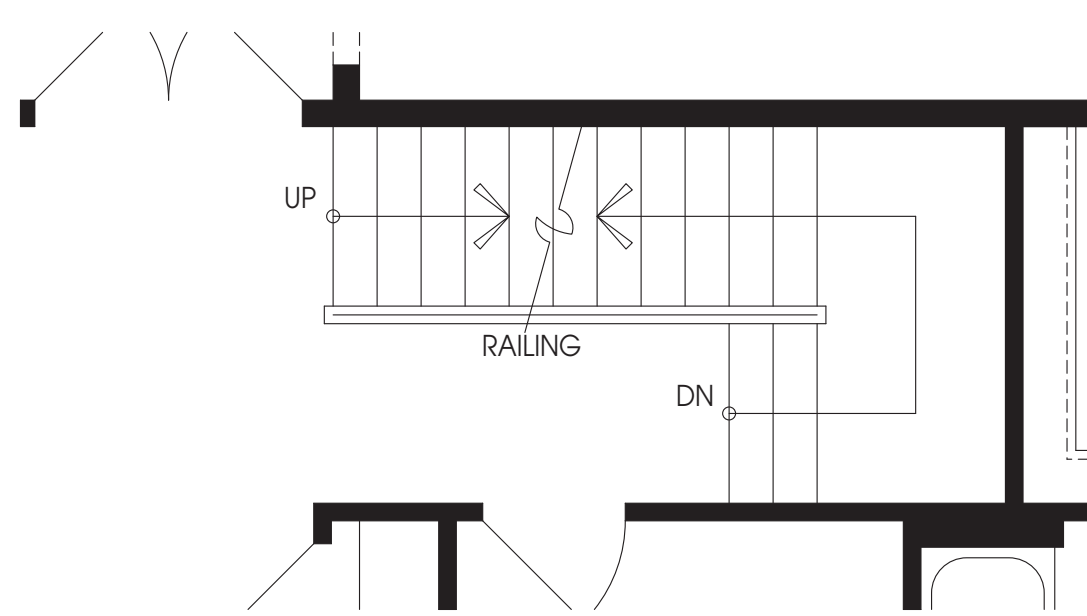
ELEVATION B



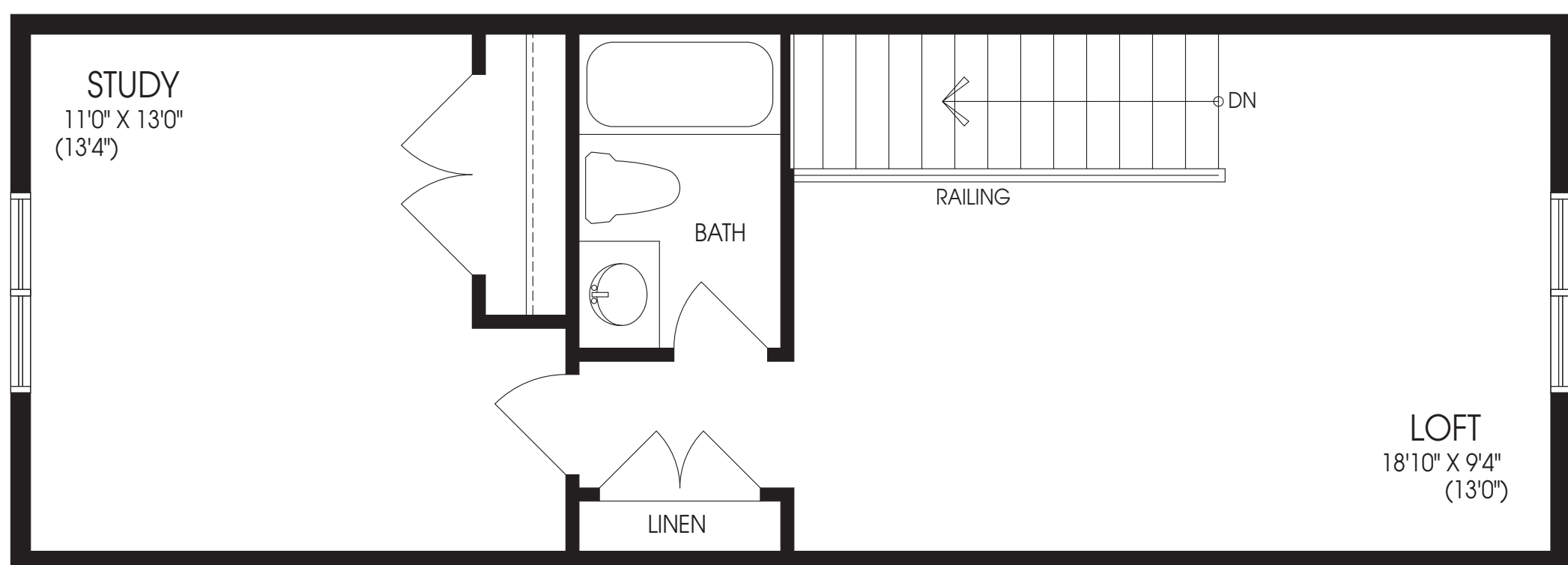
ELEVATION C



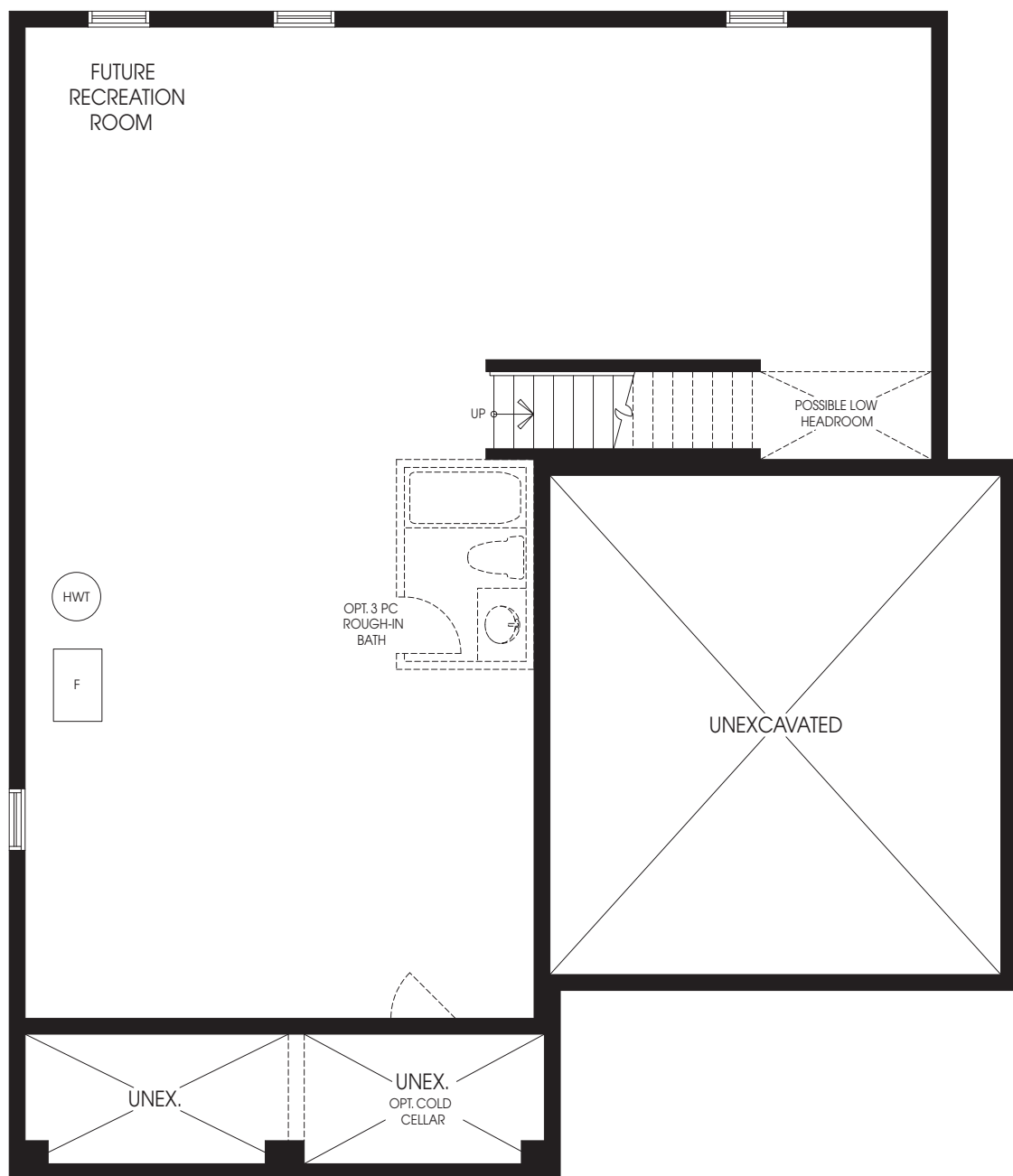
MAIN FLOOR  
ELEVATION 'B'



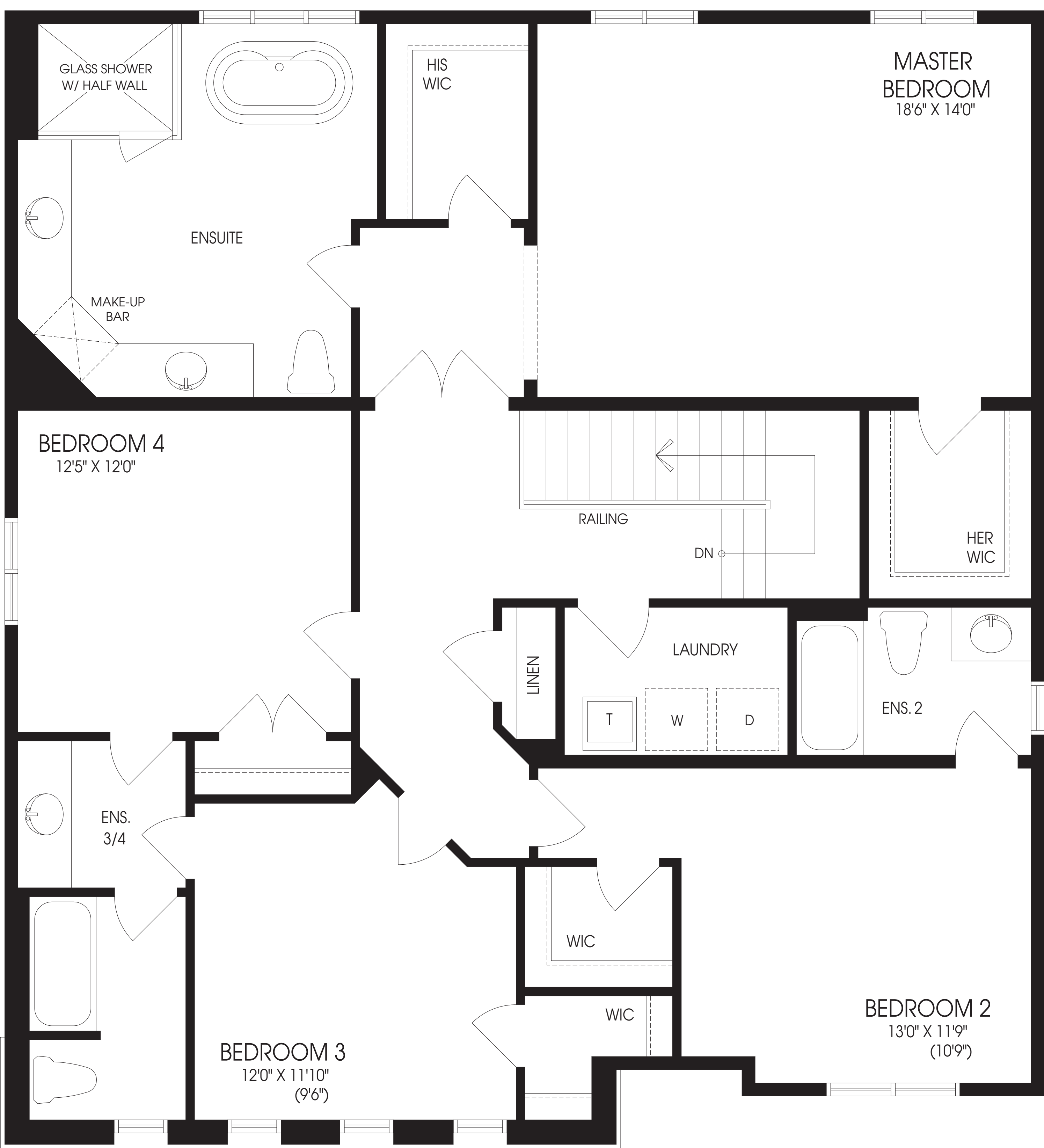
PARTIAL SECOND FLOOR FOR  
OPTIONAL LOFT



OPTIONAL LOFT  
ELEVATION 'B'



BASEMENT  
ELEVATION 'B'



SECOND FLOOR  
ELEVATION 'B'